



world conference
cities & ports

by aiVP

New York City 2025

Ports as Battlegrounds for Decarbonisation

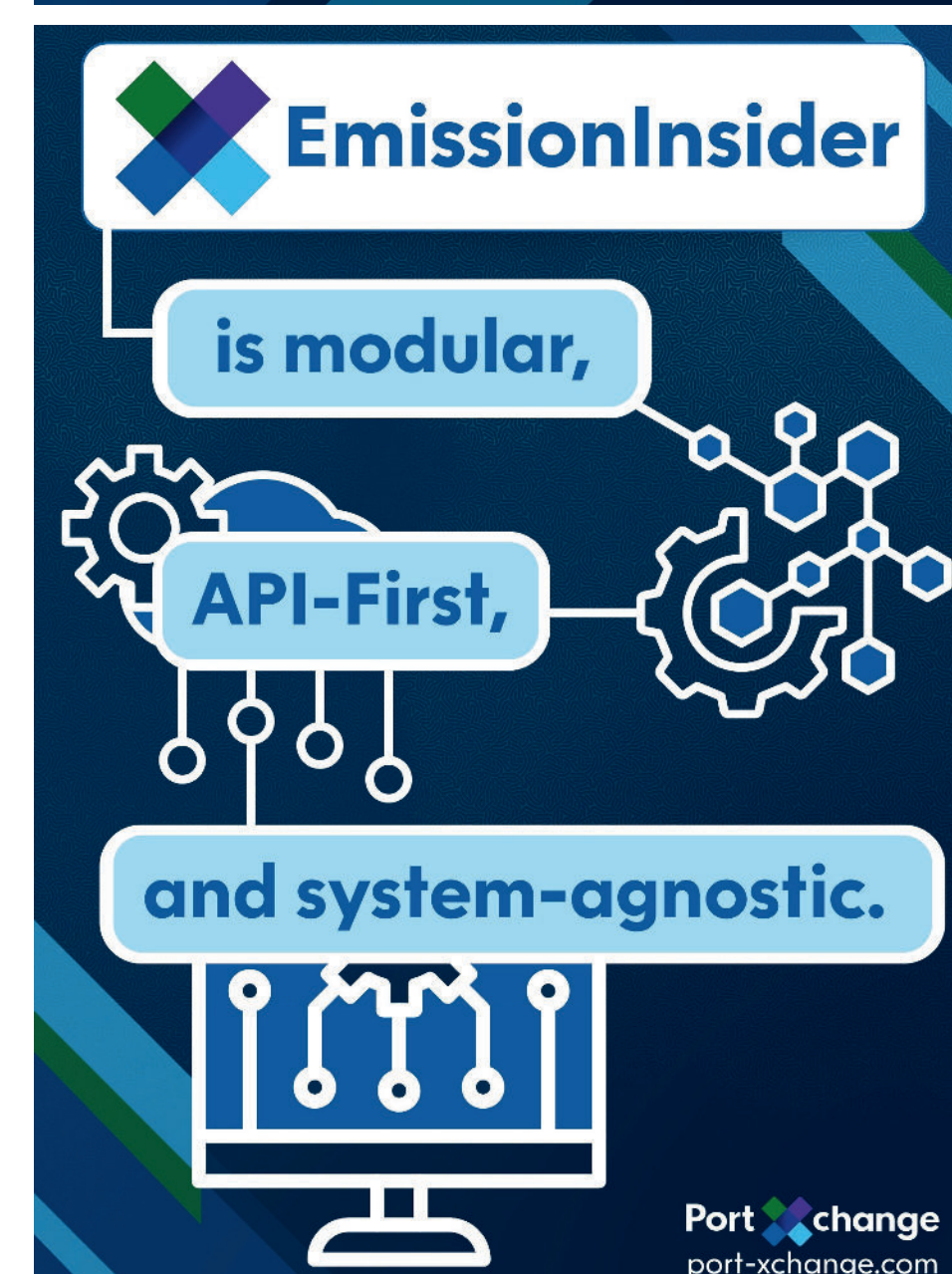
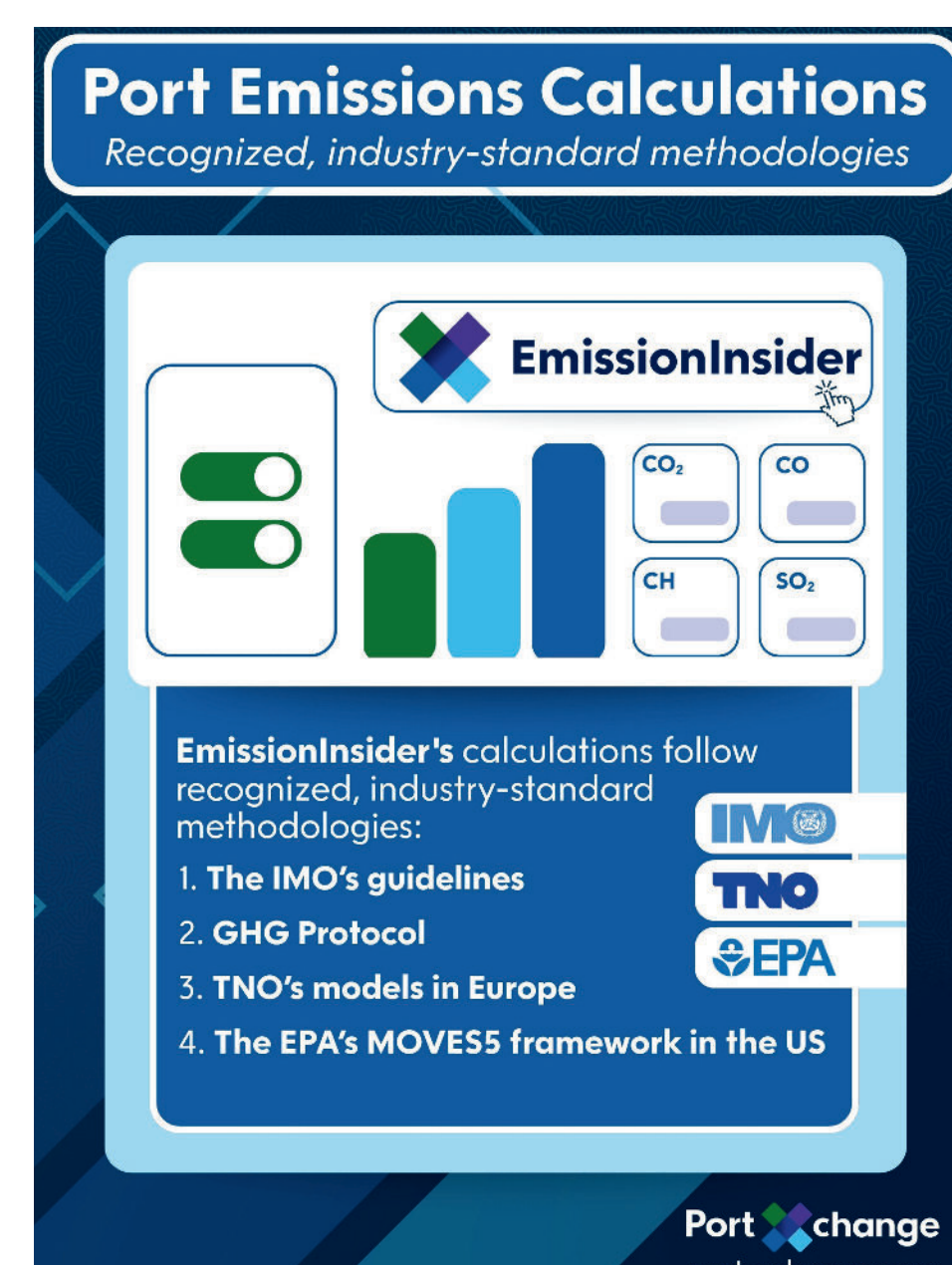
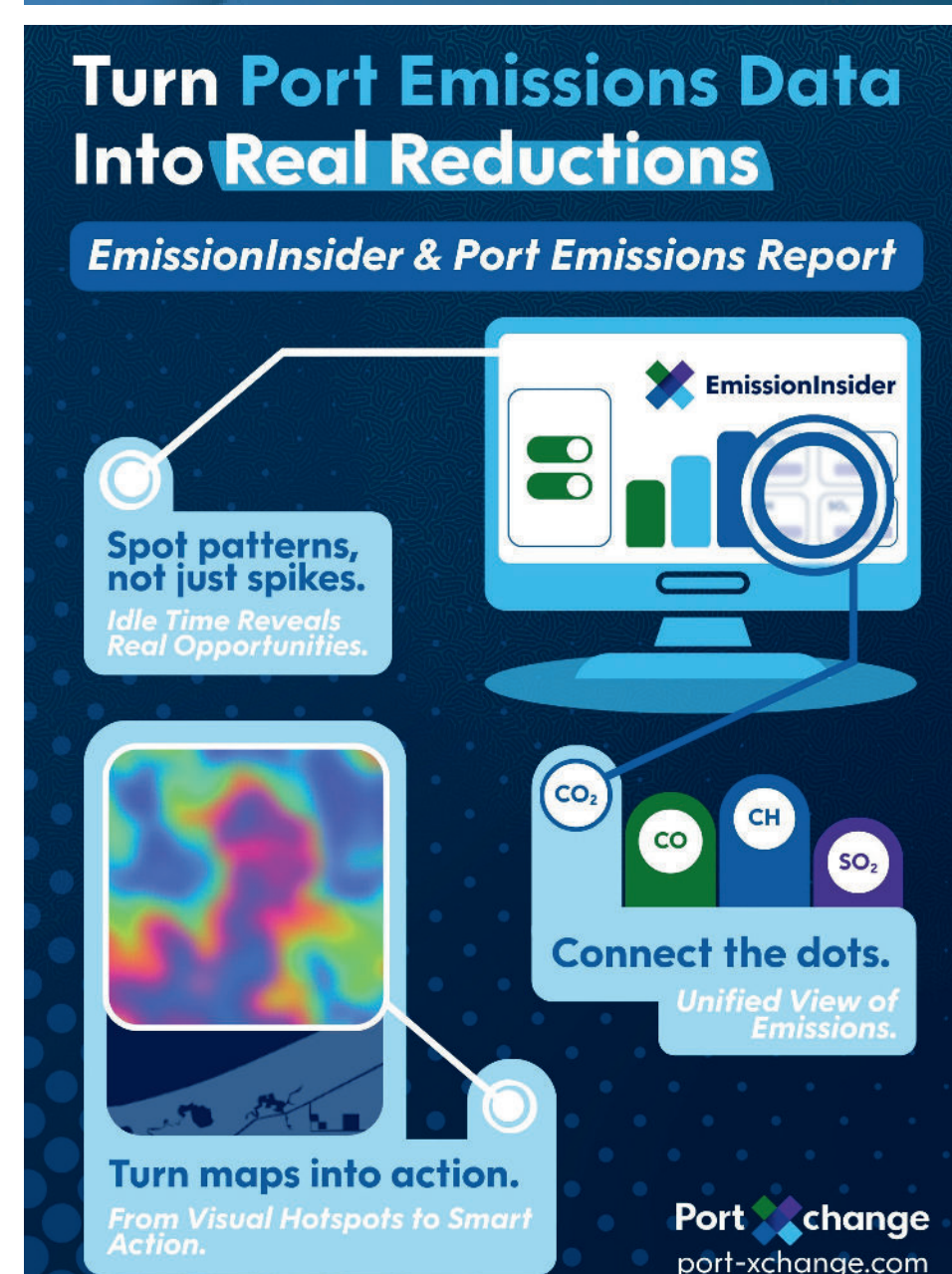
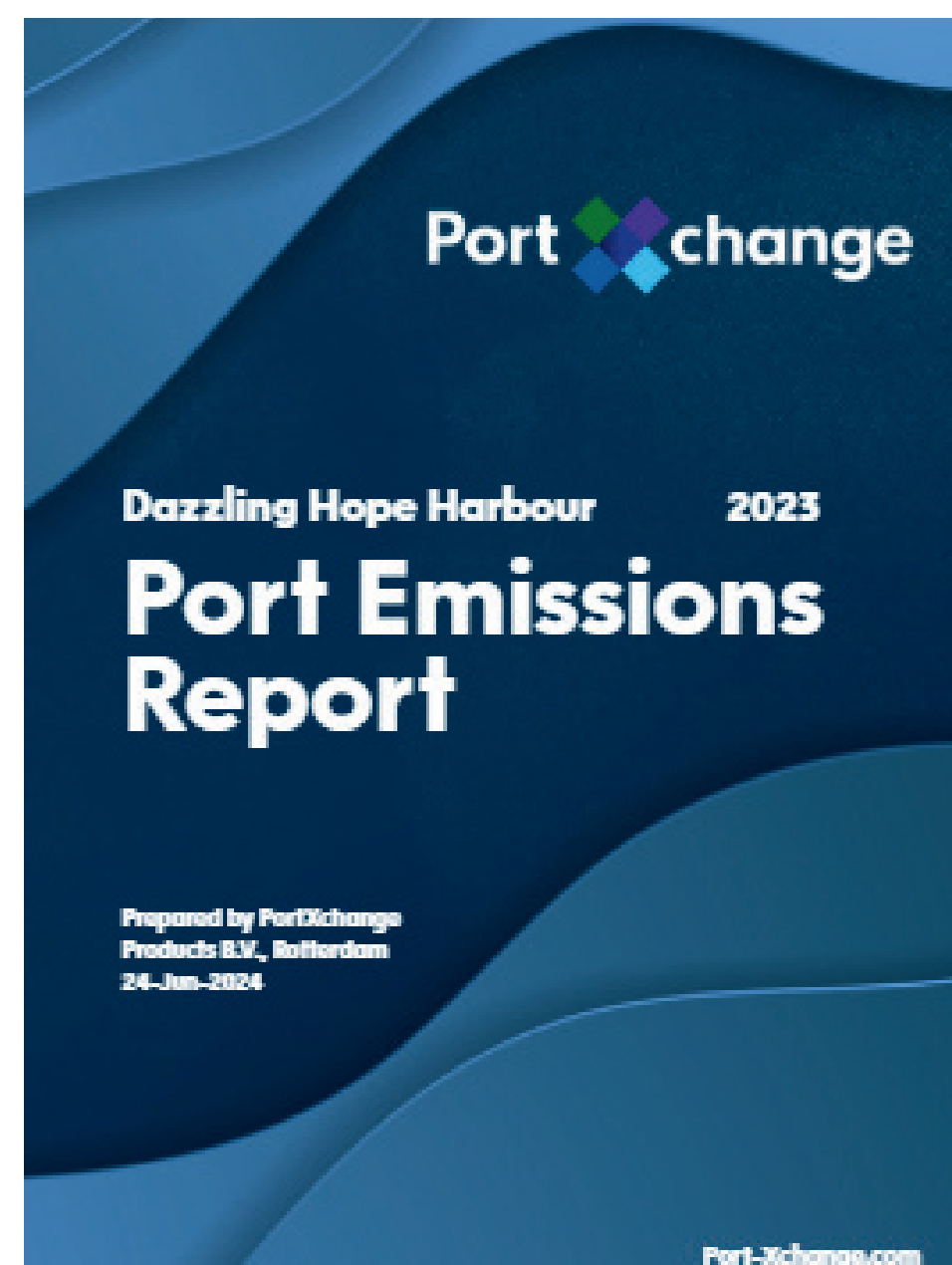
New York, USA

Breaking silence on Scope 3

One of the primary challenges in port decarbonisation is **tackling Scope 3 emissions**. These indirect emissions, originating from various activities such as supply chain logistics and tenant operations, **constitute 90% of a port's carbon footprint**. Addressing these emissions requires innovative strategies for identification, measurement, and reduction.

The Comfort of the Data Debate

Too many sustainability strategies are stalling in what we call **spreadsheet paralysis**. Perfecting decimal points has become a convenient excuse to avoid tough operational decisions. At **PortXchange**, our focus has always been working with ports to drive real, measurable change. Our roots are in maritime, port, and shipping operations, and today that legacy powers our flagship platform: **EmissionInsider**.

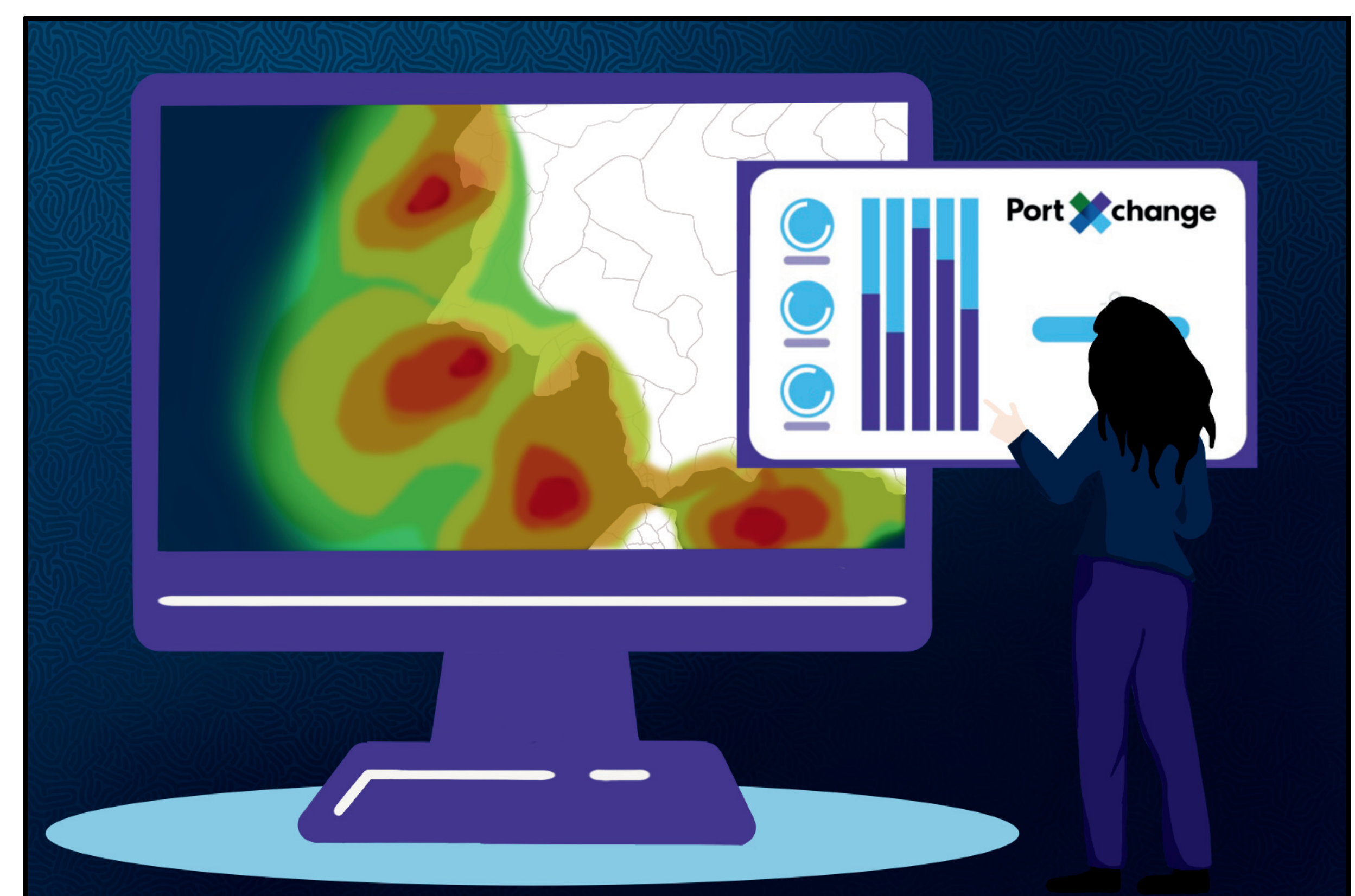


Designed for How Ports Actually Work

Ports don't have the luxury of rebuilding their tech stack just to decarbonize. **EmissionInsider** and our **Port Emissions Report** don't just measure emissions; they show exactly where reductions can be made, now.

- Spot **patterns**, not just **spikes**. Long-term trends, like average idle times at berth, often reveal far bigger reduction opportunities than reacting to short-term anomalies.
- **Connect the dots**. By integrating datasets across ships, terminals, trucks and rail, **we provide every stakeholder**, including terminal operators, shipping lines, and service providers, **with the same emissions reality**.
- Turn maps into action. Our clear, visual hotspot analysis makes it easy for decision-makers to see the problem and act with confidence.

Ports can now turn **complex datasets** into **public-friendly insights** for communities and boards, transforming **transparency into trust**.



More information & contact:



Matthew Swenson
US Account Executive
matthew.swenson@port-xchange.com



Sjoerd de Jager
Co-Founder & Managing Director
sjoerd.de.jager@port-xchange.com



Port  change

www.port-xchange.com

By

