



The new port of Mahajanga

A project for economic and social development

Mahajanga, Madagascar

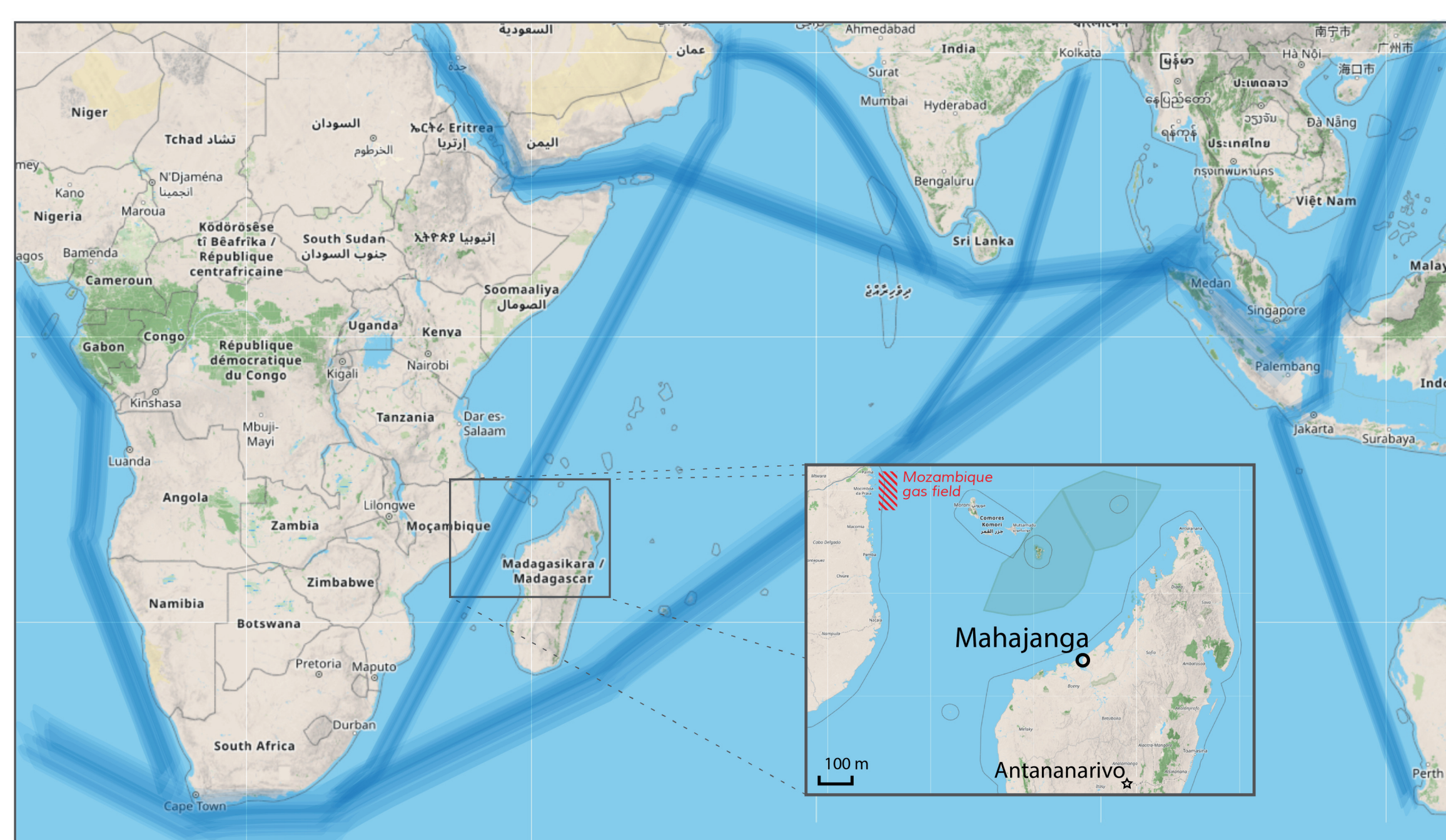
Overcoming poverty

Madagascar, where 75% of the population lives below the poverty line and the population grows by around **one million people each year**, faces major socioeconomic challenges. As a large **island nation** in the Indian Ocean, its social development depends heavily on strengthening economic activity and trade through its ports.

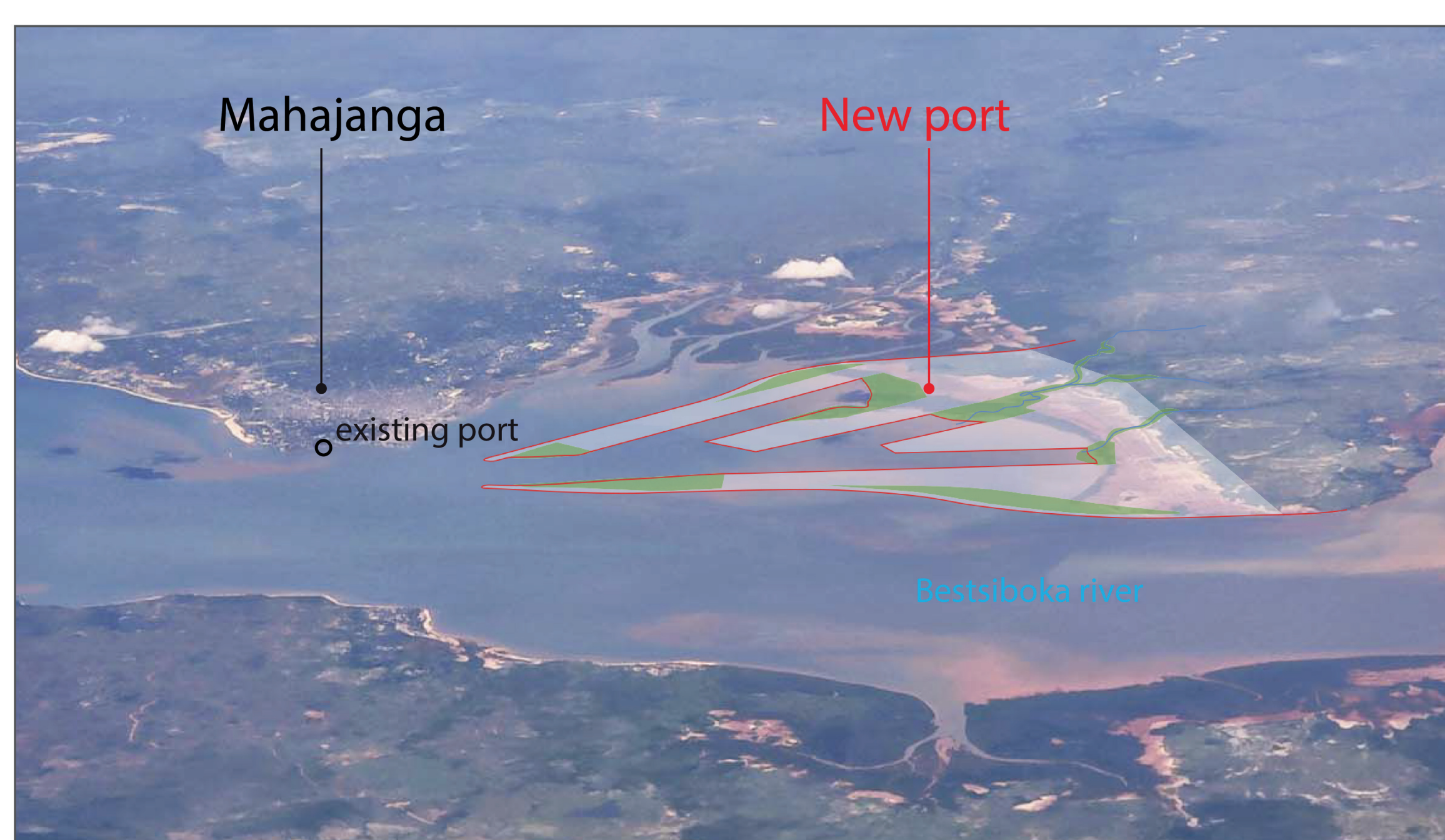
Propose a future

The construction of a large port in **Mahajanga**, Madagascar's third-largest city, is intended to serve as a hub for growth and long-term economic integration along the island's north-western coast. The project aims to boost local and regional trade with countries bordering the **Mozambique Channel**. The port's multi-phase development, spanning 5,000 hectares, will follow a **systemic** and **circular-economy** approach.

The port will support **local agri-food sectors**, facilitate the **export of minerals** such as iron from Soalala, and host manufacturing and digital industries, including connectivity through the **2Africa submarine cable**. This development is paired with an **energy strategy** that leverages gas from Mozambique for **electricity production**, complementing photovoltaics and providing an alternative to the country's predominantly oil-fired power plants. The port's transformation into an **estuarine hub** will follow a sustainable approach, including **environmental measures** such as **mangrove restoration**, **climate-adaptive infrastructures**, and **urban planning** tailored to Madagascar's structural realities. This long-term vision comes from the architects and urban planners of the **TANOSY Think Tank**. The vision seeks to aim beyond the short-term focus of the Malagasy State and promote a mature, responsible approach to the country's development.



Location of the port of Mahajanga in maritime traffic



Aerial view of the project's footprint



Masterplan of the new port of Mahajanga

More information & contact:



Mrs Voninkazo RANDRIANARISOLO
architect & planner
vr.architecte@gmail.com



Mr Serge MAMMARELLA
urban planner, port expert
s.mammarella@map-oi.fr

